

# MIRADA PETROLEUM, INC.

15500 W Telegraph Rd Ste D32 Santa Paula, California 93060

Phone: 805-933-1901 Fax: 805-933-9901



January 13, 2016

Joshua Cwikla  
Los Angeles regional Water Control Board  
320 W. Fourth Street, Suite 200  
Los Angeles, Ca. 90013

2016 JAN 15 PM 2:24  
CALIFORNIA REGIONAL WATER  
QUALITY CONTROL BOARD  
LOS ANGELES REGION

Dear Mr. Cwikla,

I had previously written you in regards to the sumps issue in associated with the properties that Mirada operates. I was at that time a bit confused as to the meaning of "sumps" and thought it pertained to sumps or pits that were used to discharge or percolate fluids to the surrounding soil. After talking with one of your associates, I realized that we do in fact operate one pit on the MP Lane lease.

Mirada did operate a pit located on the Harth lease. Its use was discontinued sometime prior to 1997. It was used for storing wastewater from the Harth lease. Approximately 120 bbl per month was put into the pit. It was constructed of 4" thick concrete and was impermeable so there was no discharge to the surrounding soils. The water was pulled out via a vacuum truck along with any sediment. This was taken to Santa Clara Waste Water Facility located in Santa Paula Ca. An above ground tank has been used since that time.

We do currently operate a small pit on the MP Lane Lease. Again this pit is constructed with 4" concrete. It is impermeable and no fluid is discharged to the surrounding soil.

The well produces for three months at which time approximately 30 bbl of water is drained from the stock tank. This produced water is then pulled out with a vacuum truck and disposed at Anterra facility on Oxnard.

In summary, Mirada uses one pit that DOES NOT discharge fluid to the surrounding soil.

Thank you for taking the time on this issue. If there is ANY further information needed please contact me as soon as possible.

Thank you,

  
Scott Price  
Mirada Petroleum

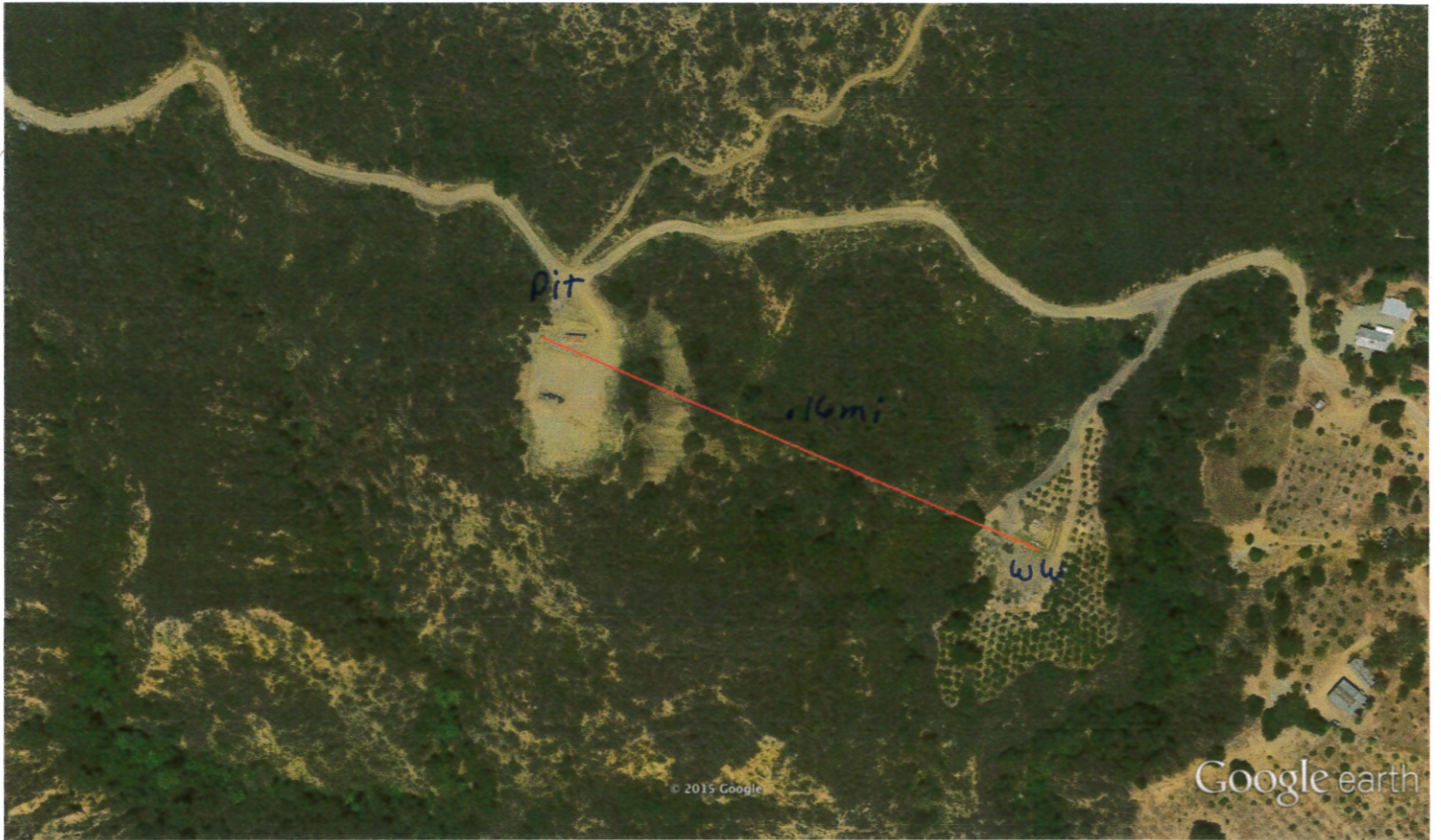




Google earth



*Mp Lane well site*



Google earth

